

# THE GREEN COLLECTION

GOLF VILLAS BY ELEVATION

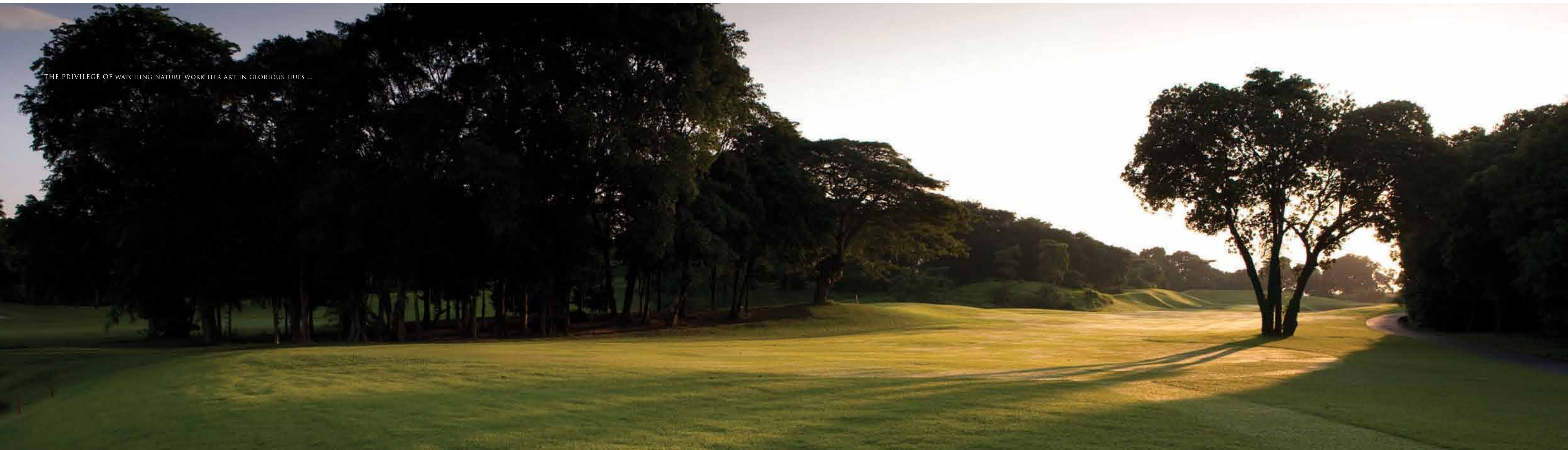




THE PRIVILEGE OF PICTURESQUE PANORAMIC VIEWS...



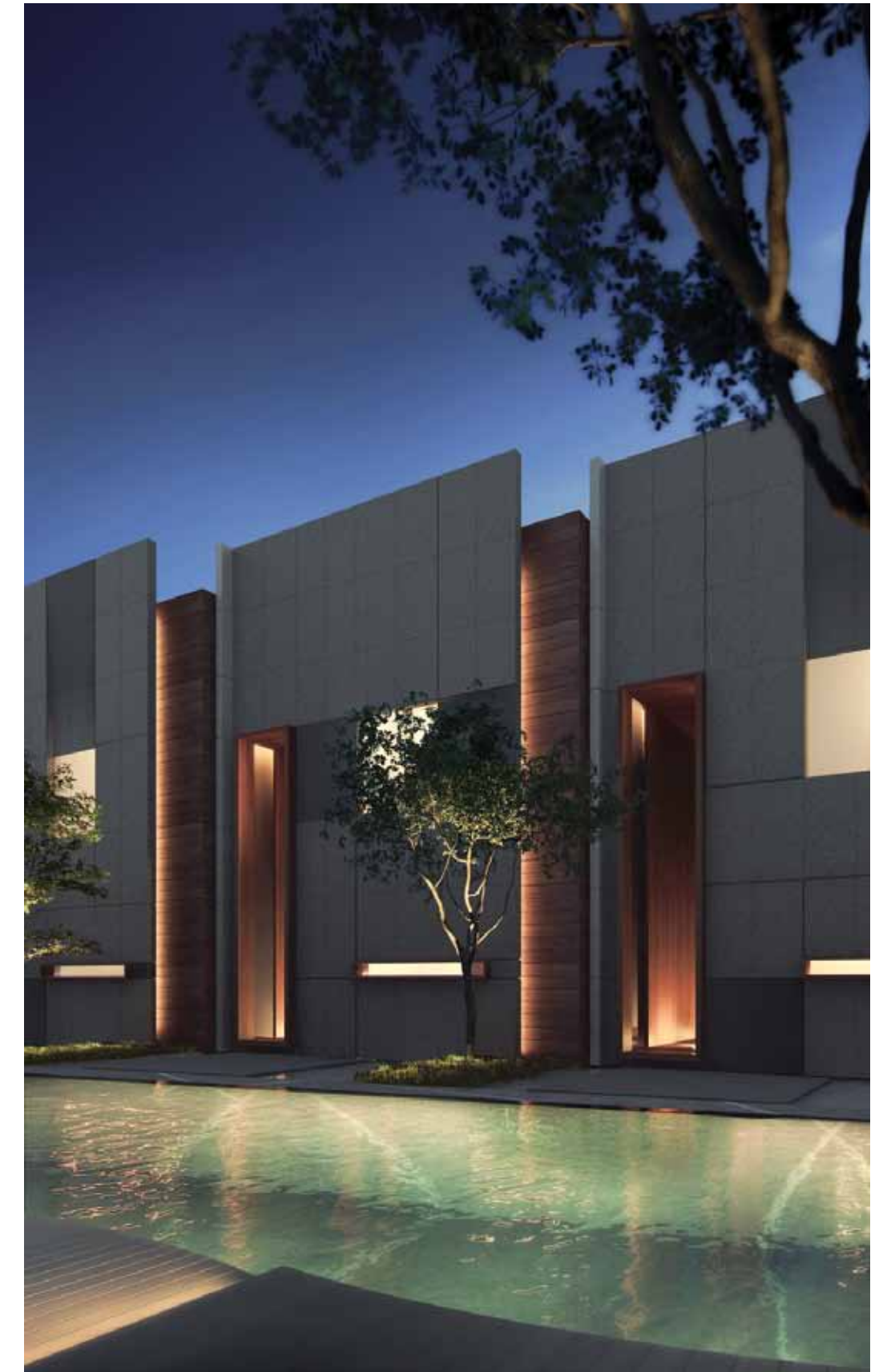
THE PRIVILEGE OF WATCHING NATURE WORK HER ART IN GLORIOUS HUES ...





... ALL WITHOUT STEPPING BEYOND YOUR FRONT DOOR.

THE GREEN COLLECTION . WHERE A PRIVILEGED FEW SHALL CALL HOME.





# THE GREEN COLLECTION

GOLF VILLAS BY ELEVATION

THE GREEN COLLECTION IS THE ONLY RESIDENTIAL DEVELOPMENT IN SINGAPORE TO BE BEAUTIFULLY SITUATED RIGHT ON THE FRINGES OF A WORLD-CLASS GOLF COURSE. AN EXCLUSIVE ENCLAVE OF TWENTY METICULOUSLY CRAFTED VILLAS, EACH OFFERING 6000 SQUARE FEET OR MORE OF LIVING SPACE OVERLOOKING THE MANICURED FAIRWAYS OF THE TANJONG GOLF COURSE, ONE OF SENTOSA GOLF CLUB'S TWO INTERNATIONAL CHAMPIONSHIP COURSES. ENJOY TRULY WORLD-CLASS GOLFING AMENITIES AND UNOBSTRUCTED FAIRWAY VIEWS AMID THE SPLENDOUR OF ONE OF THE WORLD'S FINEST ADDRESSES.

The Green Collection is located in the prestigious residential southern precinct of Sentosa Cove, and is the 2013 Singapore Institute of Architects Award winner for housing. The award is based on attributes such as originality and innovation, sensitivity to context, sustainability, response to climate, response to users' needs, and elegance of construction and detail.

Singapore enjoys a reputation as a cosmopolitan first world economy and global financial hub with its paradise island of Sentosa being one of the world's most sophisticated residential playgrounds. It offers a myriad of first-class oceanfront and maritime lifestyle choices on your doorstep, including Resorts World, Singapore.

Affording owners the prestige of a landed property while still benefiting from the amenities offered by an ultra-luxurious condominium, The Green Collection is home to new levels of seclusion and uncompromising luxury. Within a beautifully landscaped environment, The Green Collection offers amenities such as gated seclusion, individual rooftop pools, a dedicated 24-hour concierge service, a world-class gym, as well as a fully equipped, ultra-stylish function room available only to members of this exclusive community.

Having raised the bar in terms of architectural excellence, environmental sensitivity, prestige and sophistication, The Green Collection has already left an inedible mark on Singapore's residential landscape.

# ELEVATION

LIVING BEAUTIFULLY



The Green Collection actual photography



“ELEVATION CREATES THE ULTIMATE SOPHISTICATED CONTEMPORARY LIFESTYLE.”

Conceived by Elevation and designed by pioneering architects that strive to push the envelope ever further, the homes that bear this hallmark adopt bold strokes, redefining standards of luxury and challenging the traditional relationship between form and function.

Elevation’s reputation continues to be built upon sound principles of proportion, unsurpassed quality, and maximisation of space and natural light, working in collaboration with talents who share the same creative sensibilities, and who can appreciate and express the vision through the minutest of details.

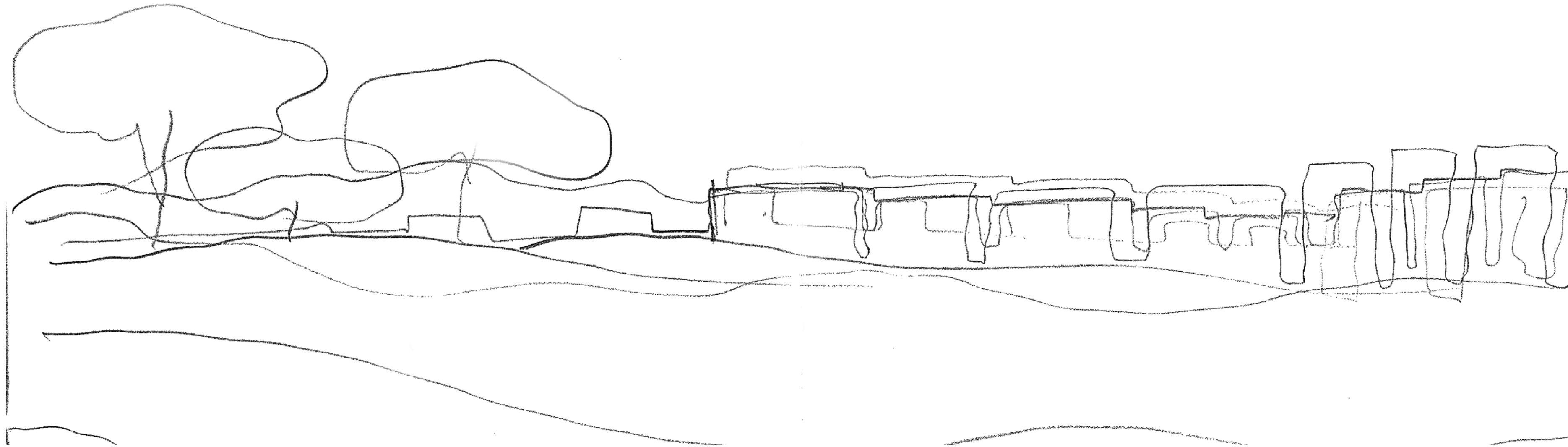
The result is superior homes created through superior ideas, with thoughtfully planned living spaces that stimulate the mind, invigorate the senses and nourish the spirit. Great design details become ultimate lifestyle experiences that stand apart from the crowd.

*Vision – to design and create the best quality homes in the best locations.*

*Nassim, Cluny Hill, Swettenham, Camborne... Highly coveted addresses in Singapore's most exclusive residential districts.*

*Modern lines flow effortlessly to create a soothing visual expression.*

*Unrivalled lifestyles experienced without limitation...*



"FRANK LLOYD WRIGHT ONCE SAID 'SIMPLICITY IS THE ULTIMATE SOPHISTICATION', AND MIES VAN DER ROHE SAID 'GOD IS IN THE DETAILS'. AT ELEVATION, THIS IS OUR GUIDING PHILOSOPHY, AND I THINK THE GREEN COLLECTION EMBODIES IT PERFECTLY."

Satinder Garcha





THE PRIVILEGE OF HAVING A DISTINGUISHED NEIGHBOUR THAT IS KNOWN TO THE WORLD.





A STUNNING CANVAS. A FINELY CRAFTED BALANCE BETWEEN LUXURY AND SIMPLICITY.





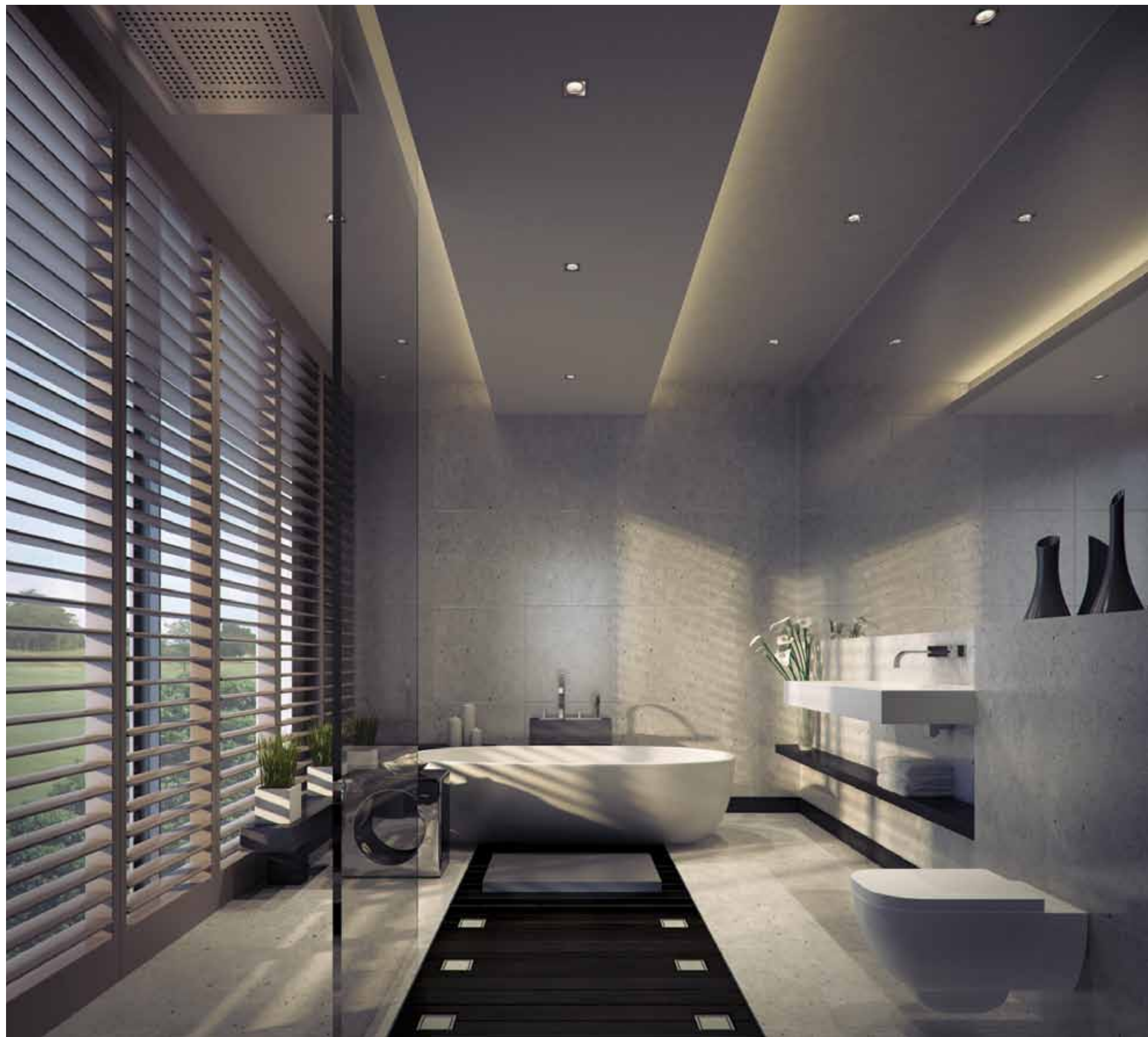
SOARING DOUBLE VOLUME HEIGHT AND WINDOWS  
OVERLOOK YOUR PRIVATE FAIRWAY VIEW.



YOUR PRIVATE LUXURY OF PURE TRANQUILITY  
AND ENVIABLE VIEWS OF WORLD CHAMPIONS TEEING OFF.









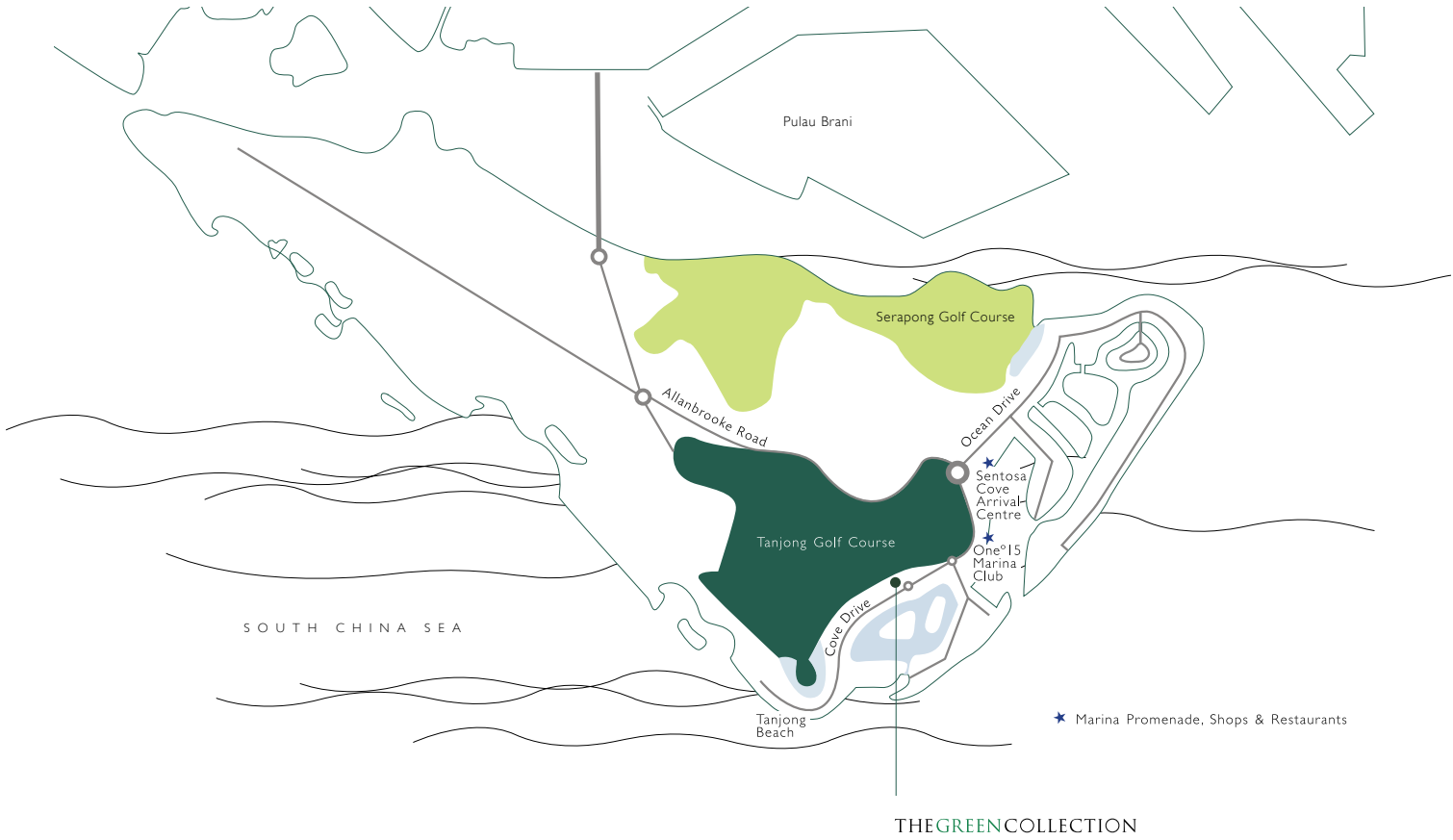
OPEN AND INVITING LIGHT-FILLED SPACES FOR LIVING AND ENTERTAINING.











COASTING THROUGH THE TREES

YOUR EXCLUSIVE JOURNEY HOME... ALWAYS A SOUL-SOOTHING PLEASURE.





ELEVATION HAS ENSURED THE GREEN COLLECTION CONTINUES ITS TRADITION OF  
EXCELLENCE BY TEAMING UP WITH SOME OF THE BEST CREATIVE MINDS IN THE BUSINESS.

#### DEVELOPER

Elevation Developments is a boutique developer of decidedly upscale landed residences whose portfolio includes luxury homes and Good Class Bungalows in prime areas such as Nassim Road. The company is helmed by India-born Singaporean Satinder Garcha, successful entrepreneur and former captain of the Singapore national polo team, whose eye for detail and great taste have resulted in some of the most elite abodes on the island. Inspired by the elements unique to each site – terrain, surrounding views, neighbourhood – Elevation has become synonymous with good design and quality of space that appeals to discerning, well-travelled buyers, creating canvases for the most exclusive luxury lifestyles.



#### ARCHITECT

World-renowned, cutting-edge architect Rene Tan was born in Malaysia and trained in architecture at Princeton University and in music at Yale University. Having worked under the guidance of acclaimed architects Michael Graves and Ralph Lerner in the USA, he returned to Asia to practice in Singapore. Obsessed with detail, he is unrelenting in his pursuit of perfection and refinement, evident in his illustrious body of work. Today, as principal of his own practice, Tan continues to acknowledge the evolution of ideas while remaining committed to restoring architecture to the realm of form.



#### LANDSCAPE ARCHITECT

Landscape architect Shunmyo Masuno from Japan is a master of tranquility. A practicing zen priest of exceptional creativity, he has achieved international acclaim for his totally fresh and original approach to landscaping while always complementing a site's natural surroundings. Masuno's entirely unique perspective on the relationship between buildings, man and his environment seeks purity of form and a harmonious respect for nature that ultimately results in a serene space to restore balance to both mind and body.



#### INTERIOR DESIGNER

British designer Kelly Hoppen is internationally acclaimed for her simple yet opulent style. Her unique design aesthetic graces the interiors of houses, apartments and yachts for a list of private clients worldwide, as well as in commercial projects such as hotels, offices and restaurants. Kelly has also stamped her signature style on informal living with her own hugely successful range of paints, fabrics, carpets, bed linen, furniture, ceramics and other home accessories. In 2009, she received an MBE for her services to interior design.



## THE GREEN TEAM



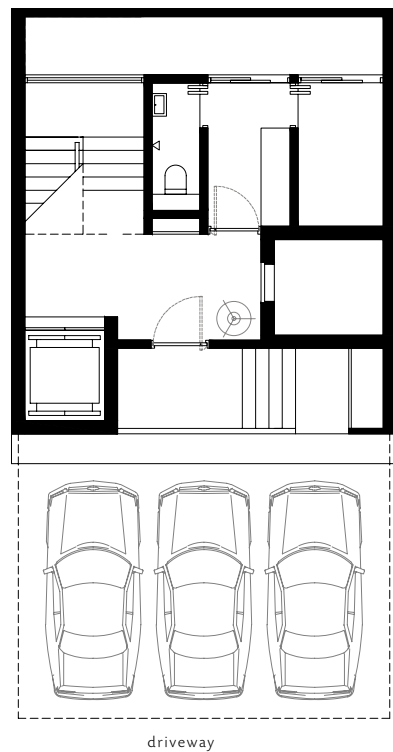


# THE GREEN COLLECTION

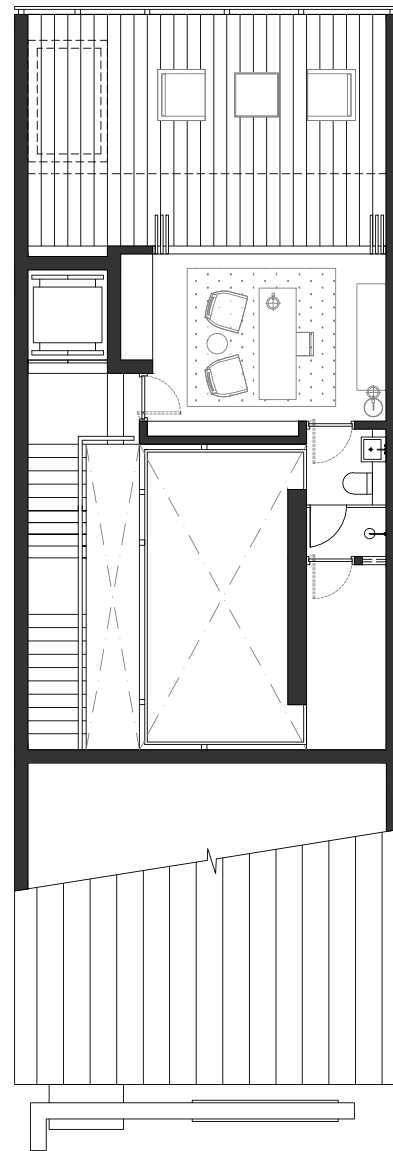
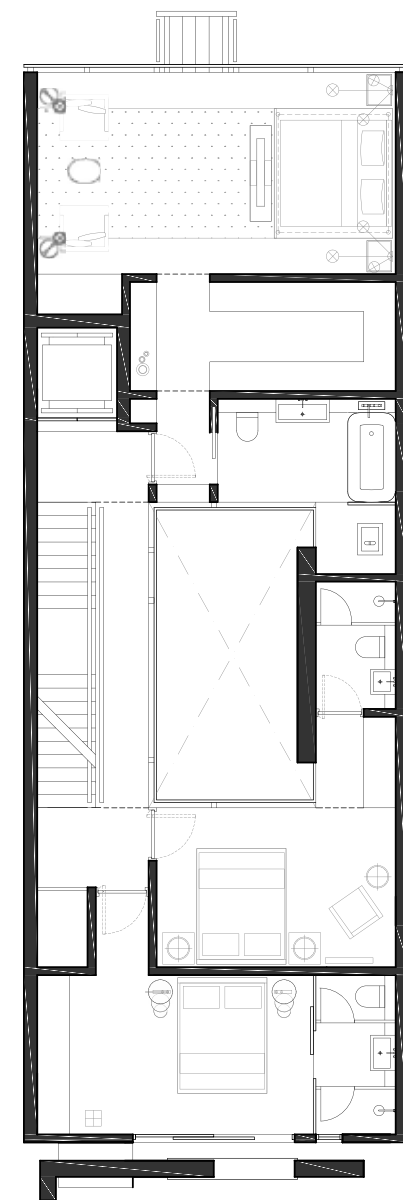
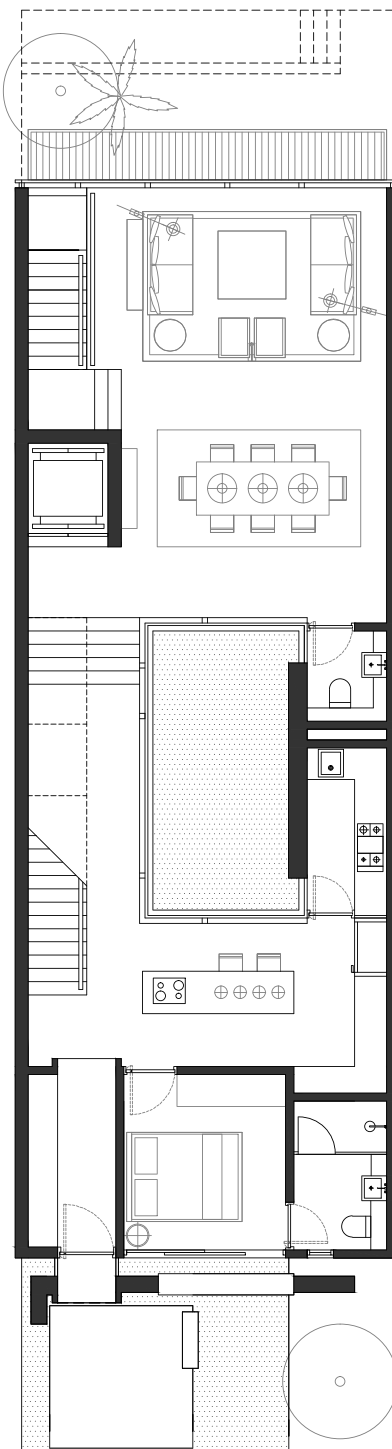
GOLF VILLAS BY ELEVATION

UNIT PLANS



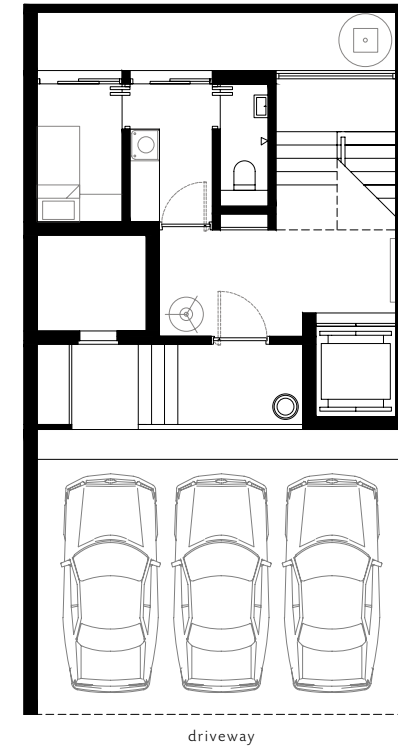


BASEMENT

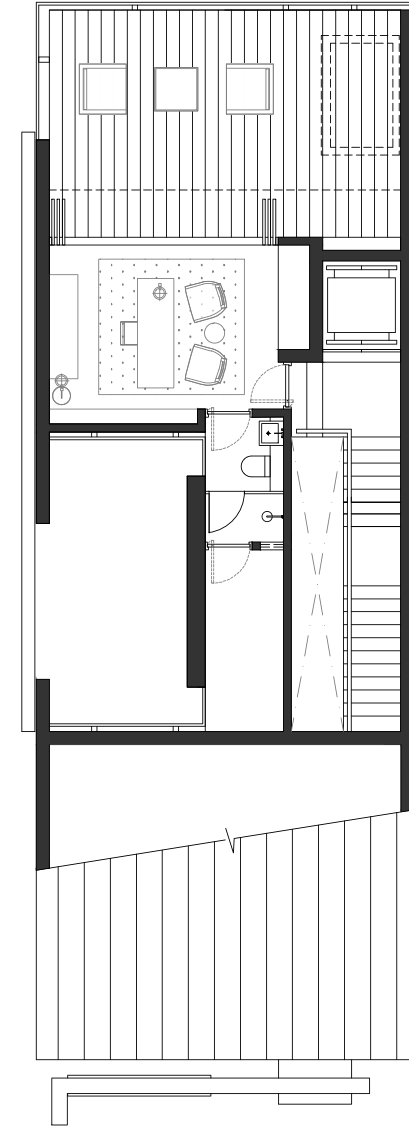
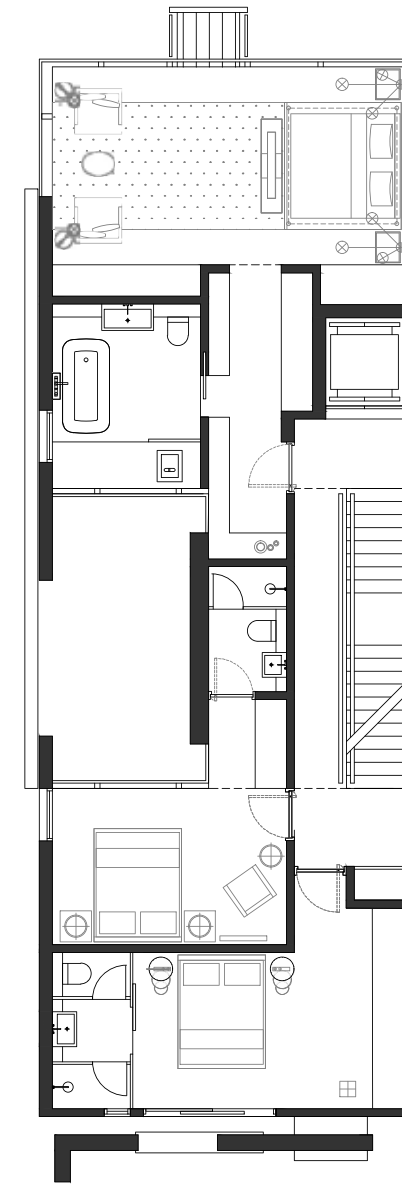
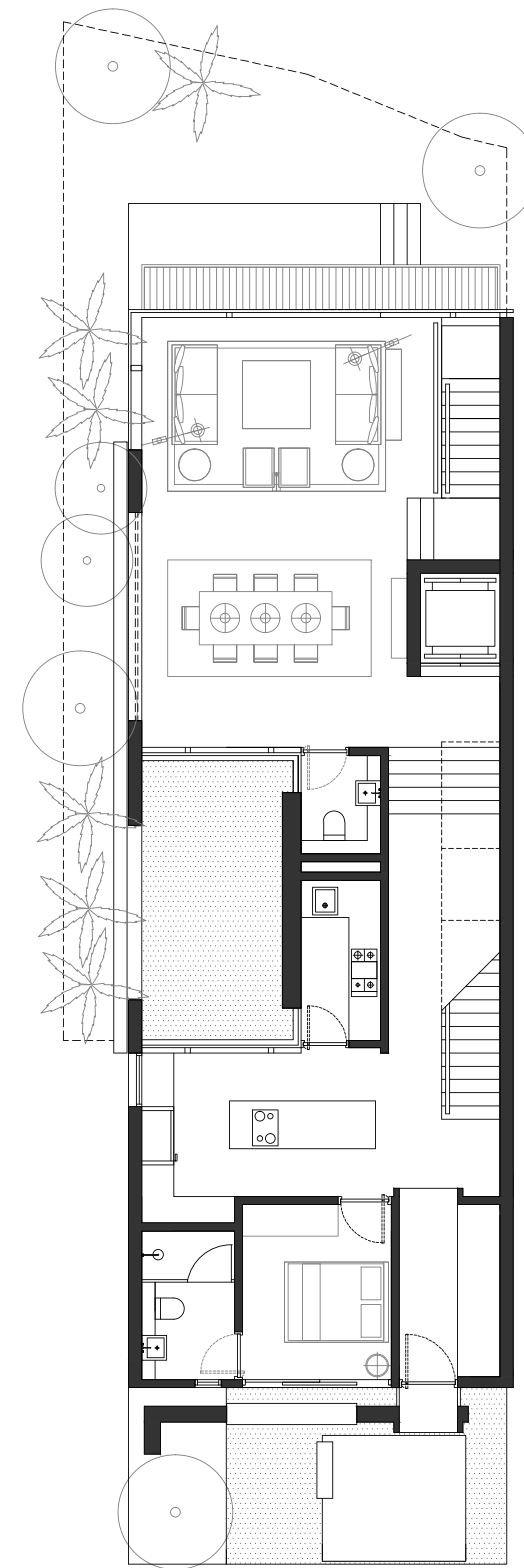


TYPE A1



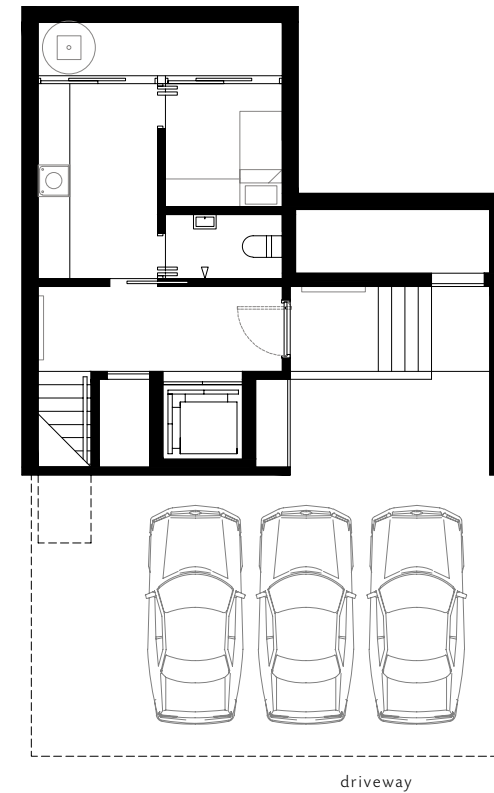


BASEMENT

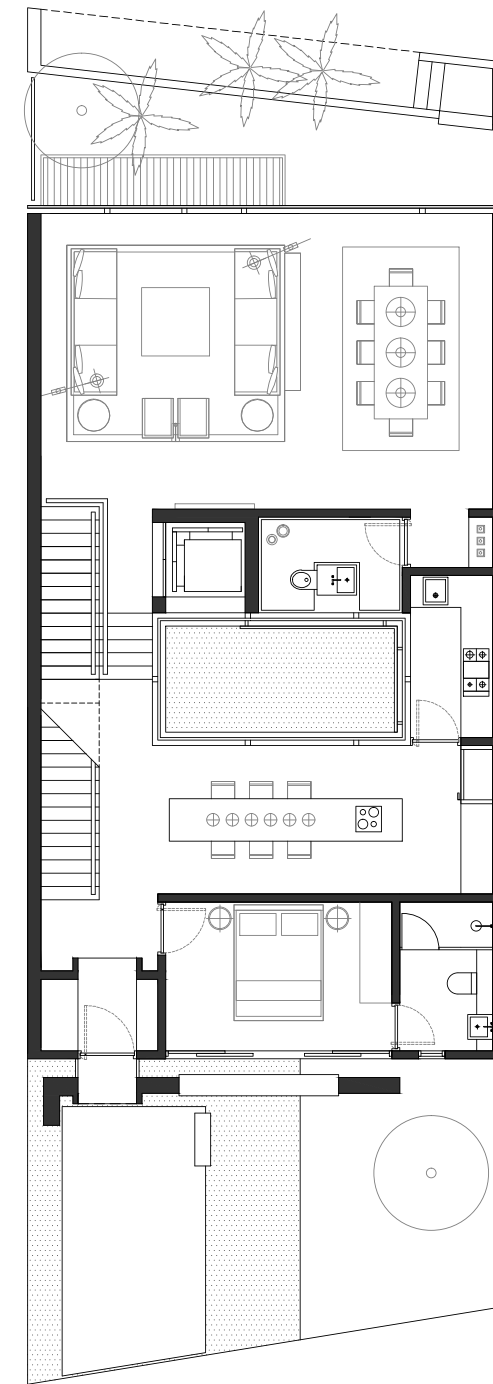


TYPE A2

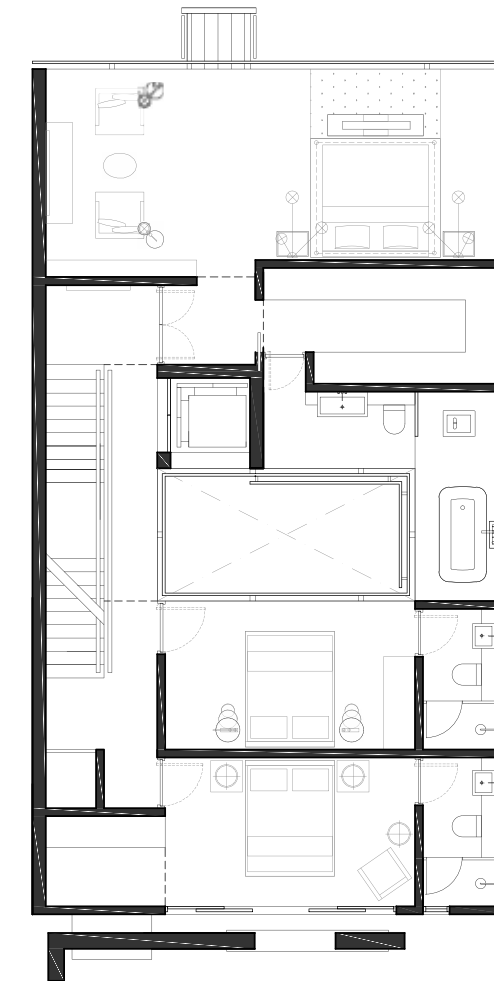




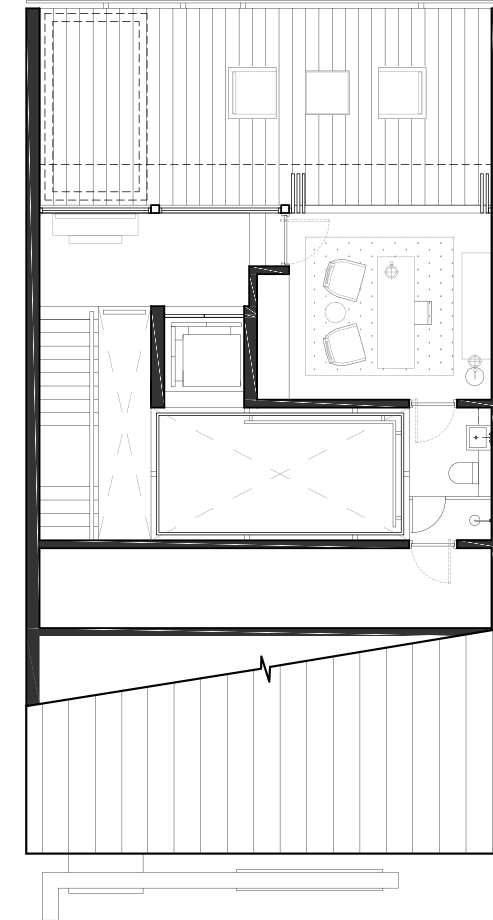
BASEMENT



1ST FLOOR



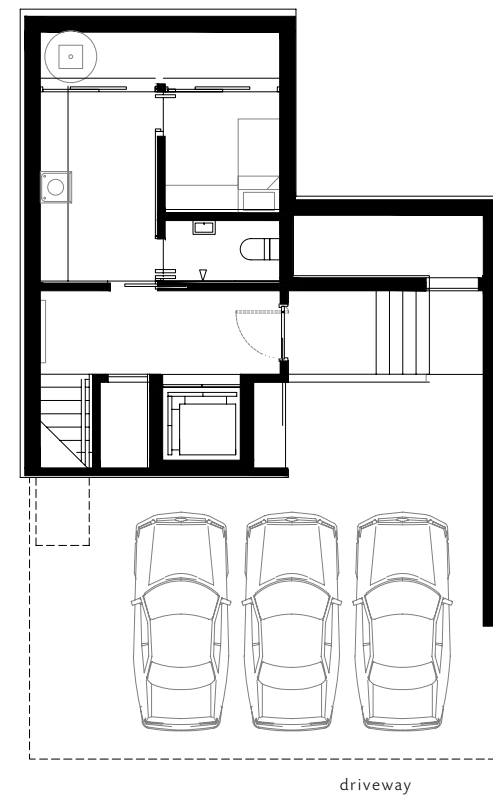
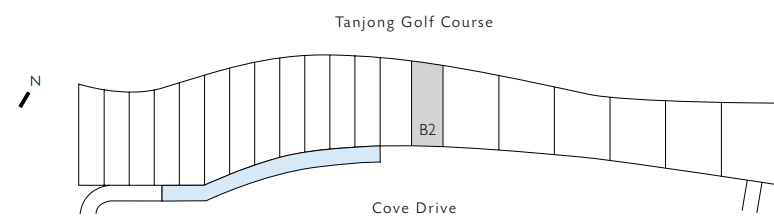
2ND FLOOR



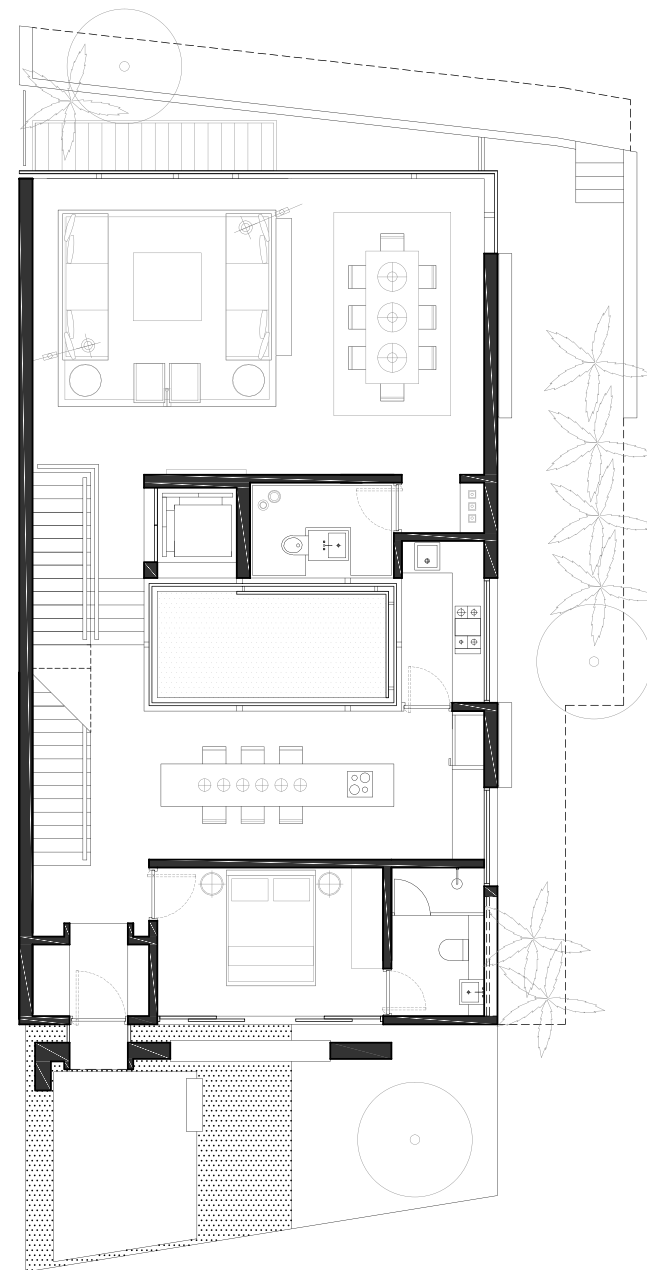
ATTIC

TYPE B1

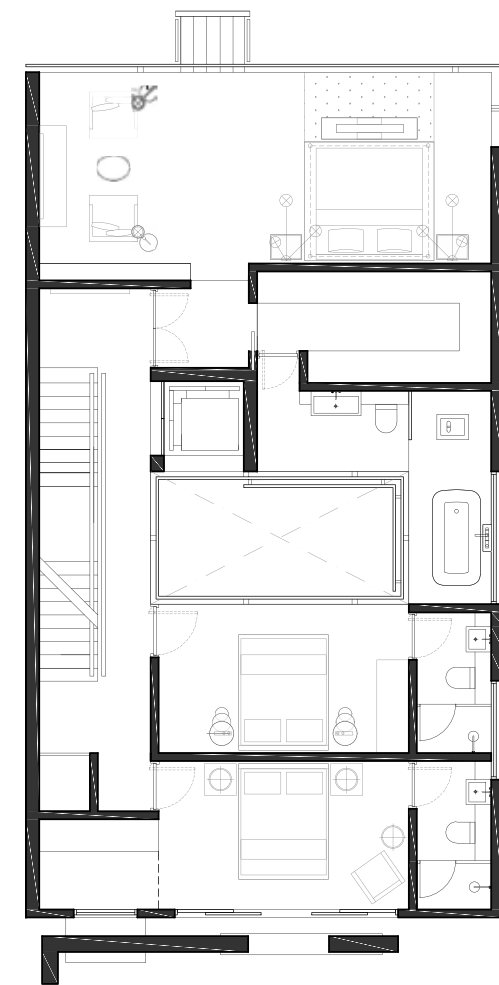




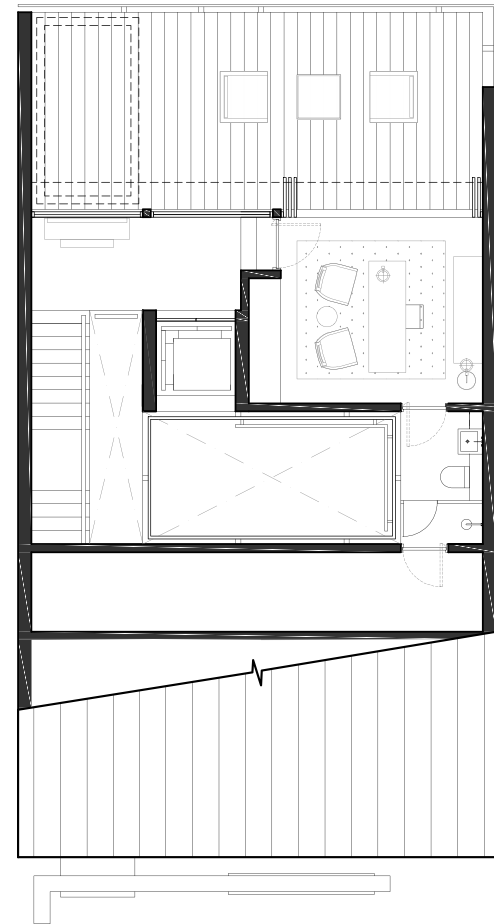
BASEMENT



1ST FLOOR



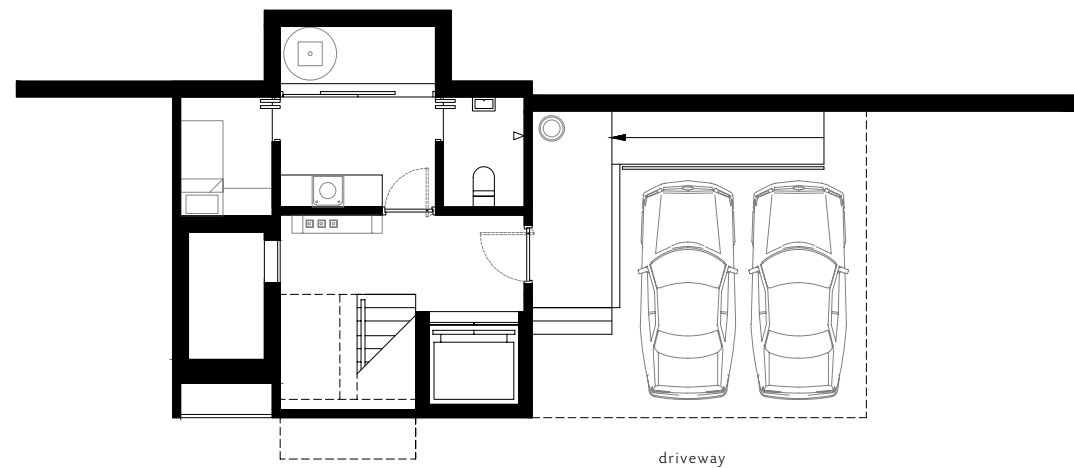
2ND FLOOR



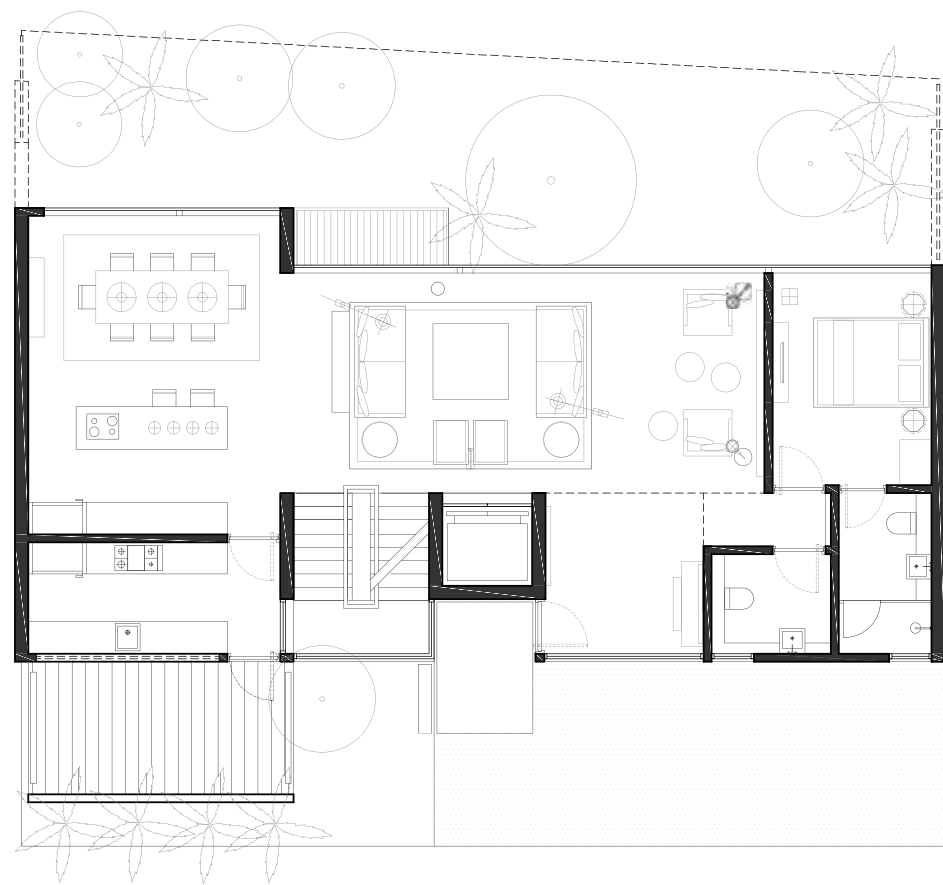
ATTIC

TYPE B2

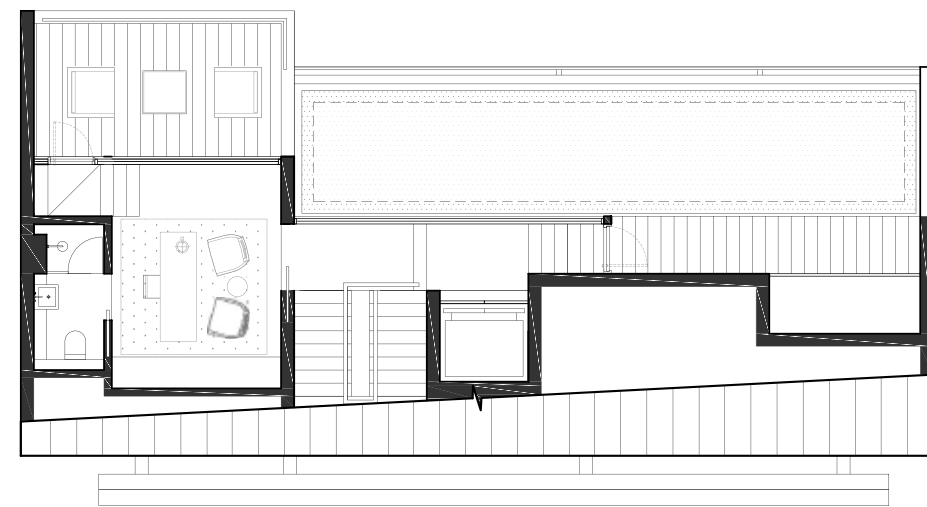




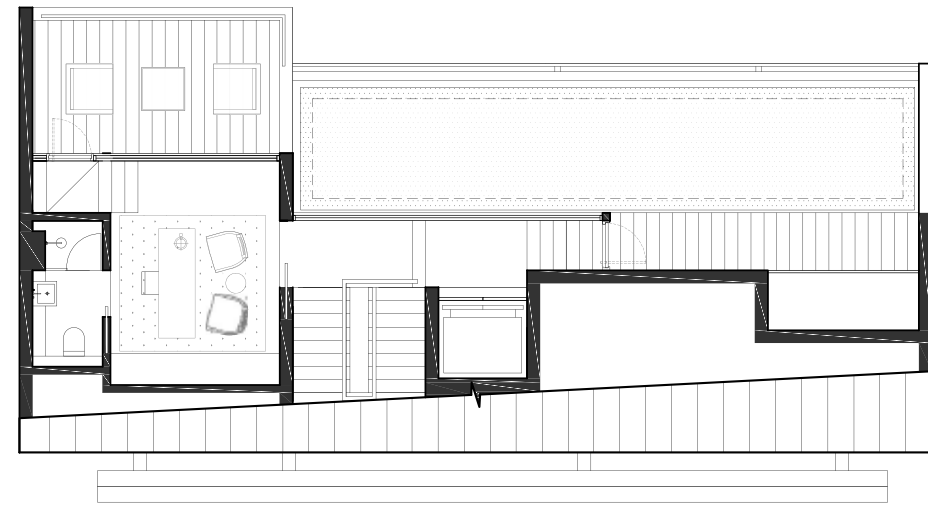
BASEMENT



1ST FLOOR



2ND FLOOR

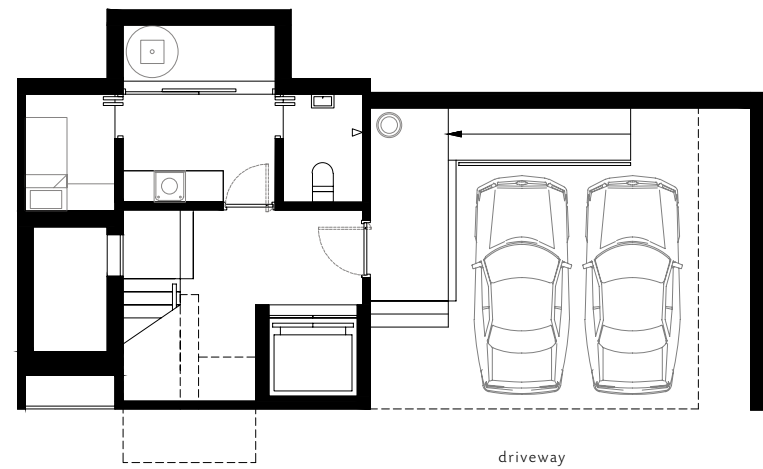


ATTIC

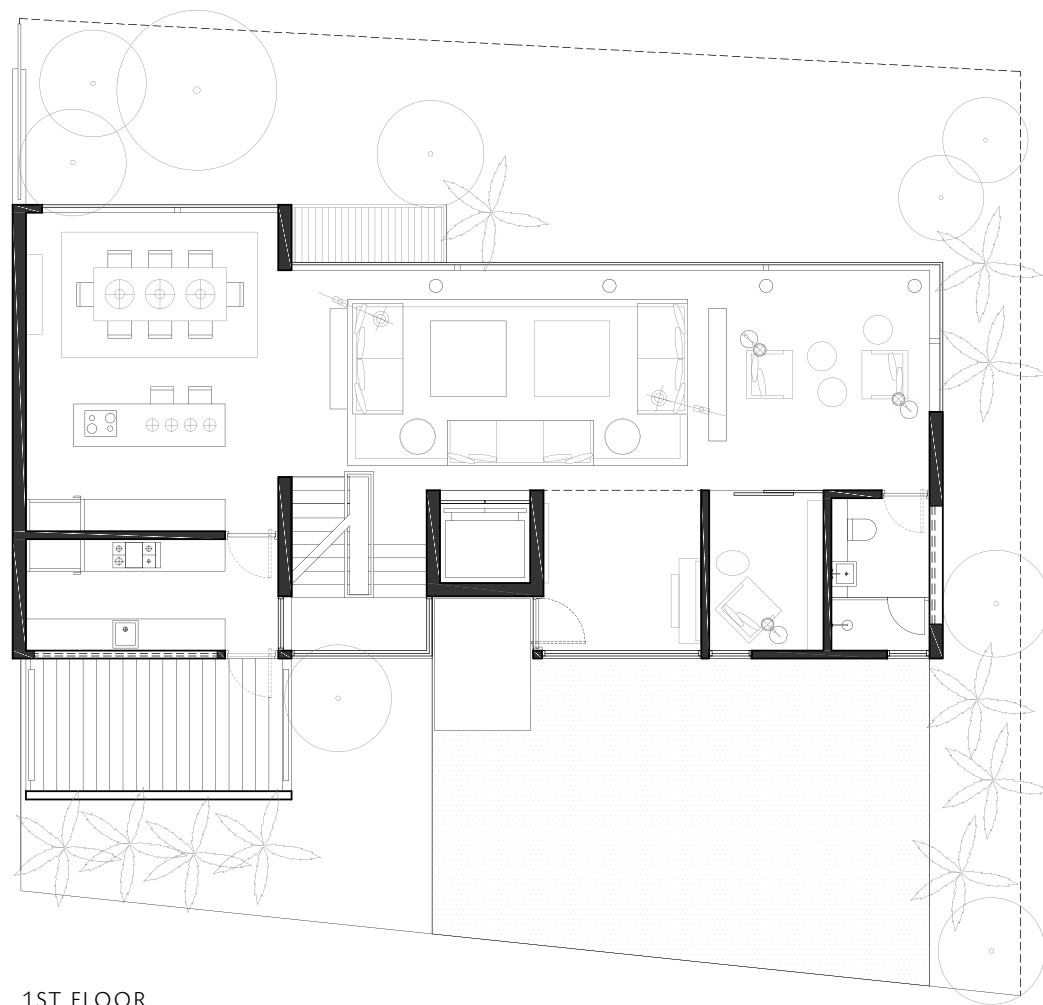
TYPE C1



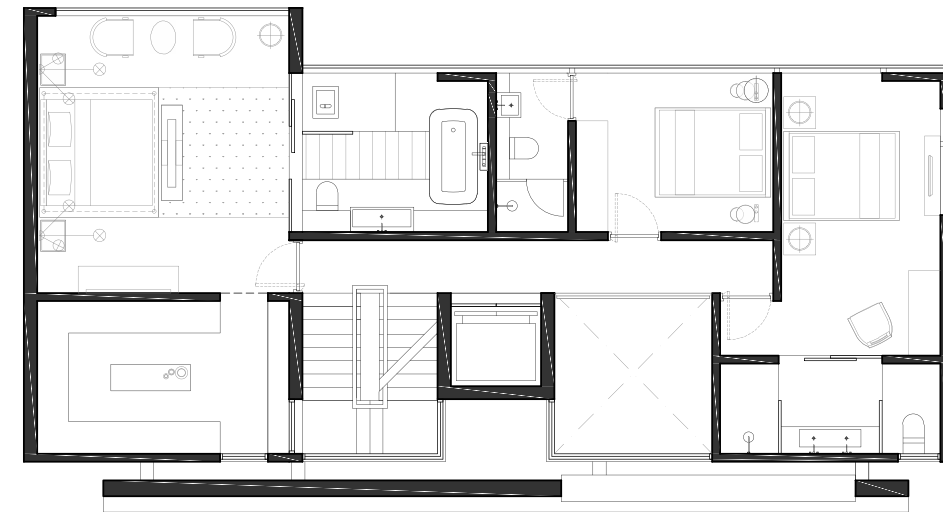




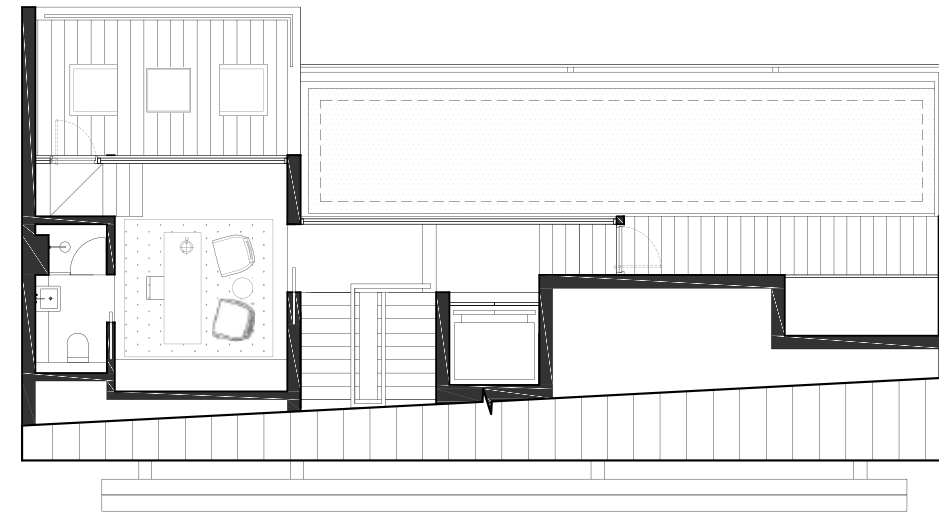
BASEMENT



1ST FLOOR

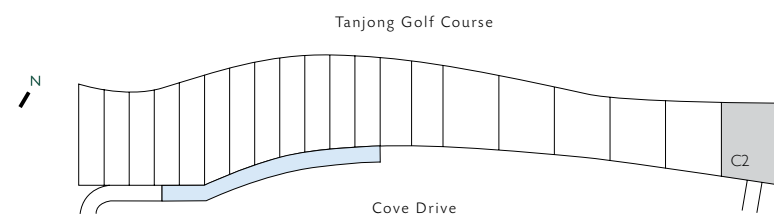


2ND FLOOR

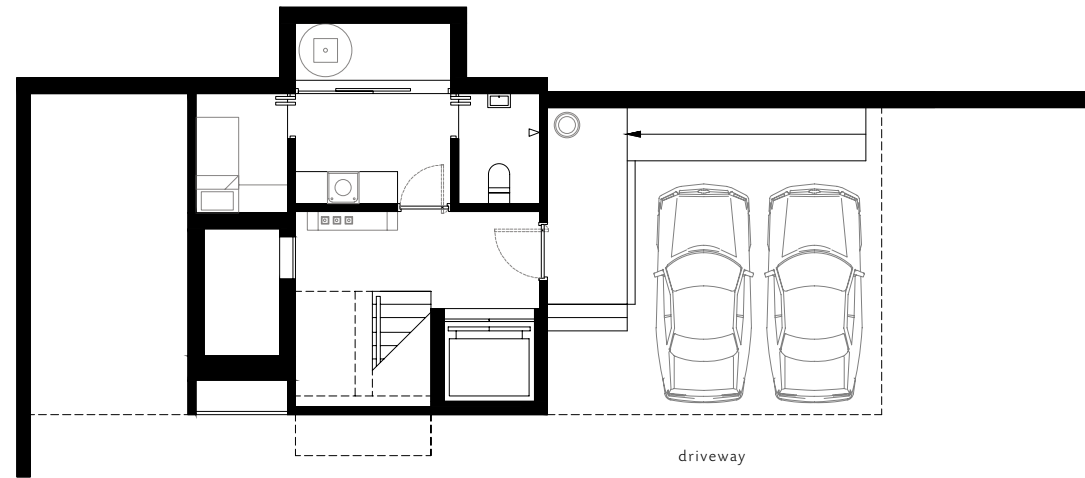


ATTIC

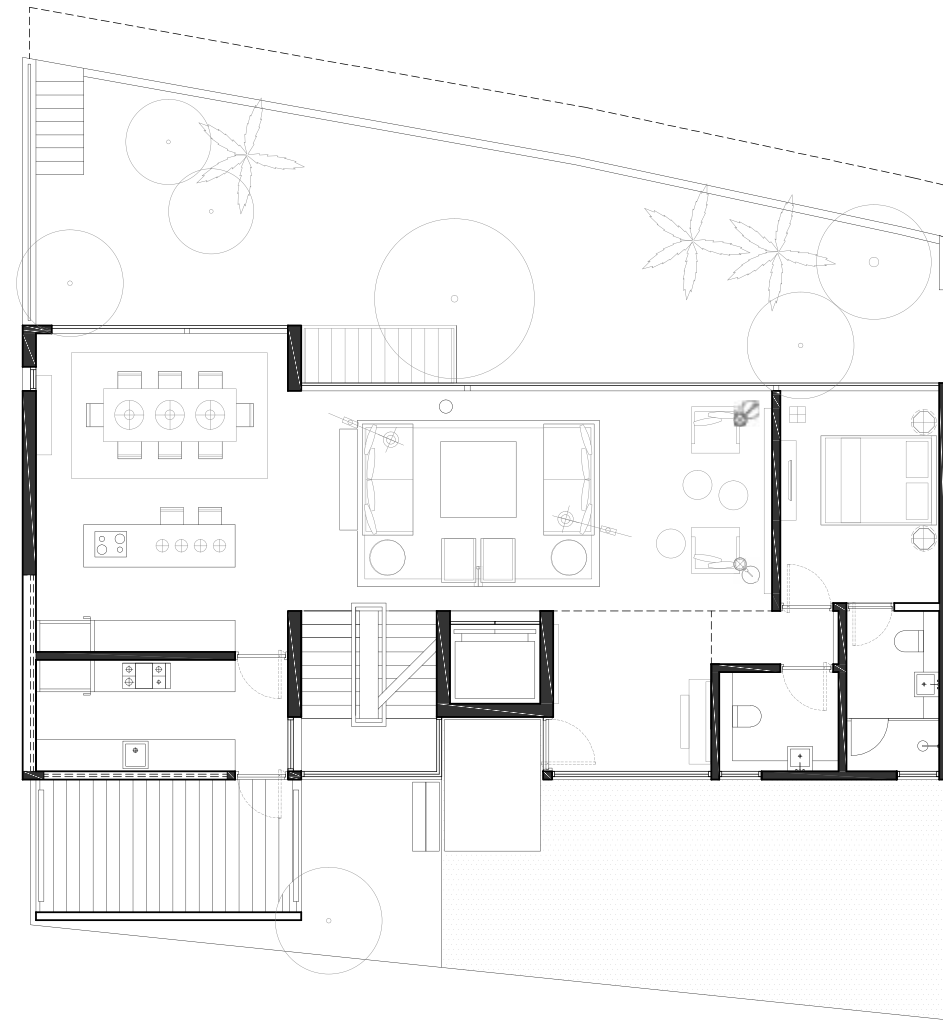
TYPE C2



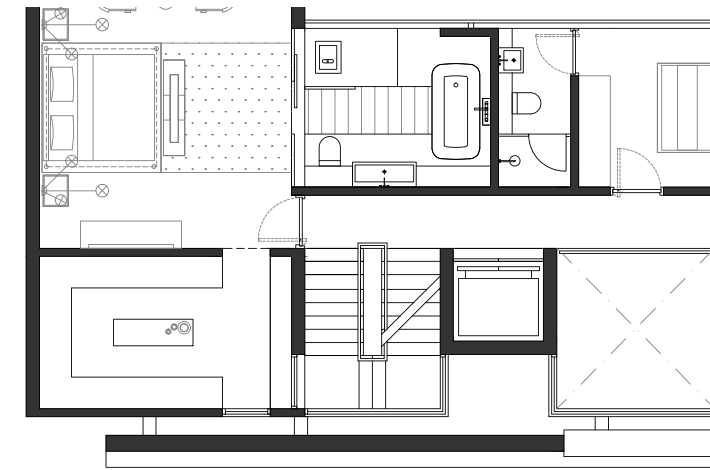




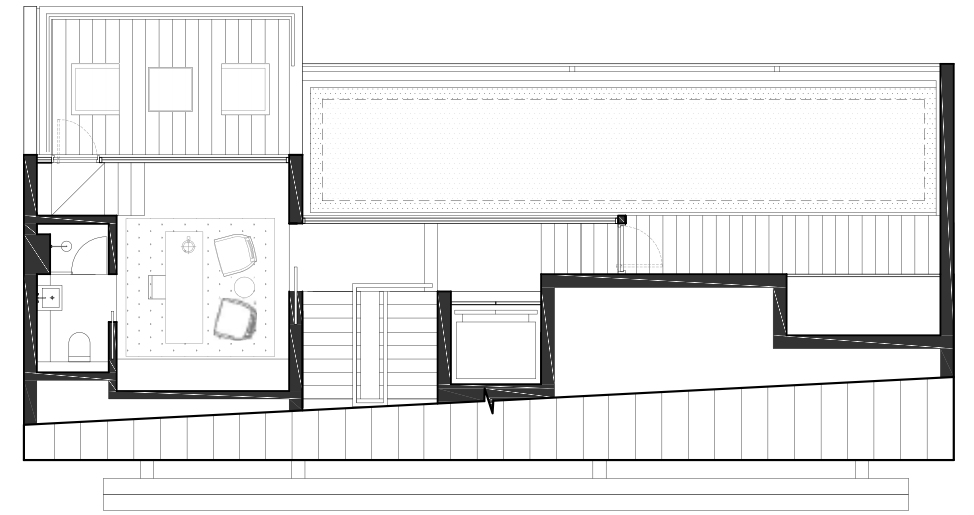
BASEMENT



1ST FLOOR

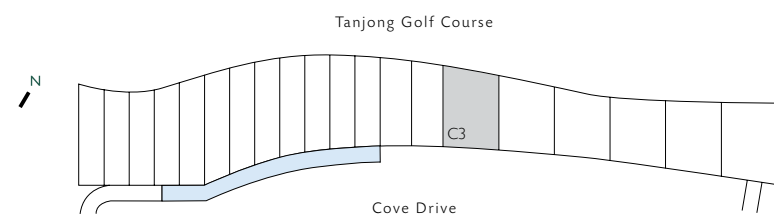


2ND FLOOR



ATTIC

TYPE C3





2013 SINGAPORE INSTITUTE OF ARCHITECTS AWARD WINNER

#### JURY CITATION

'...Creating differentiation in uniformity, the street façade is particularly distinctive. Quiet yet sharp, the design moves differentiate the design from others, where materiality and attention to detail come strongly into play. The tectonic precision and intent in each fold, incision, and the opening define clearly the architectural elements of each unit. With simple yet strong control of the repetitive cladding, the impact of small differentiation by staggering and subtle variation is pleasantly evident, and adds depth and interest to the development.

The contrast between the heavier road-facing front façade and the thin skin of full-height curtain walls in the side fronting the golf course creates interesting dialectics between the two ends of the dwelling, in response to its immediate context. In addition, the attention to details and material, from their change in scale of interior spaces and down to designing to a human scale, results in refined and comfortable interior spaces.

The jury is in full consensus that this development reads well as a cohesive whole, well integrated into its site and environment, and on a smaller scale, enjoyable and relevant to its users and inhabitants.'